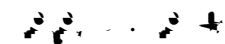




Identification of *Brachaspis* (Acrididae: Brachaspidini): Taxonomic, ecological and genetic data



Department of Zoology, University of Otago, PO Box 56, Dunedin, New Zealand; Present address: Department of Plant and Microbial Sciences, University of Canterbury, Private Bag 4800, Christchurch, New Zealand



15 July 2001 / 24 July 2001

Key words: taxonomy, ecology, genetics, *Brachaspis*

Abstract

Brachaspis robustus

(*B. nivalis*, *B. collinus*)
Brachaspis *B. robustus*
Brachaspis
() *Brachaspis nivalis*
B. robustus *B. nivalis*
B. robustus

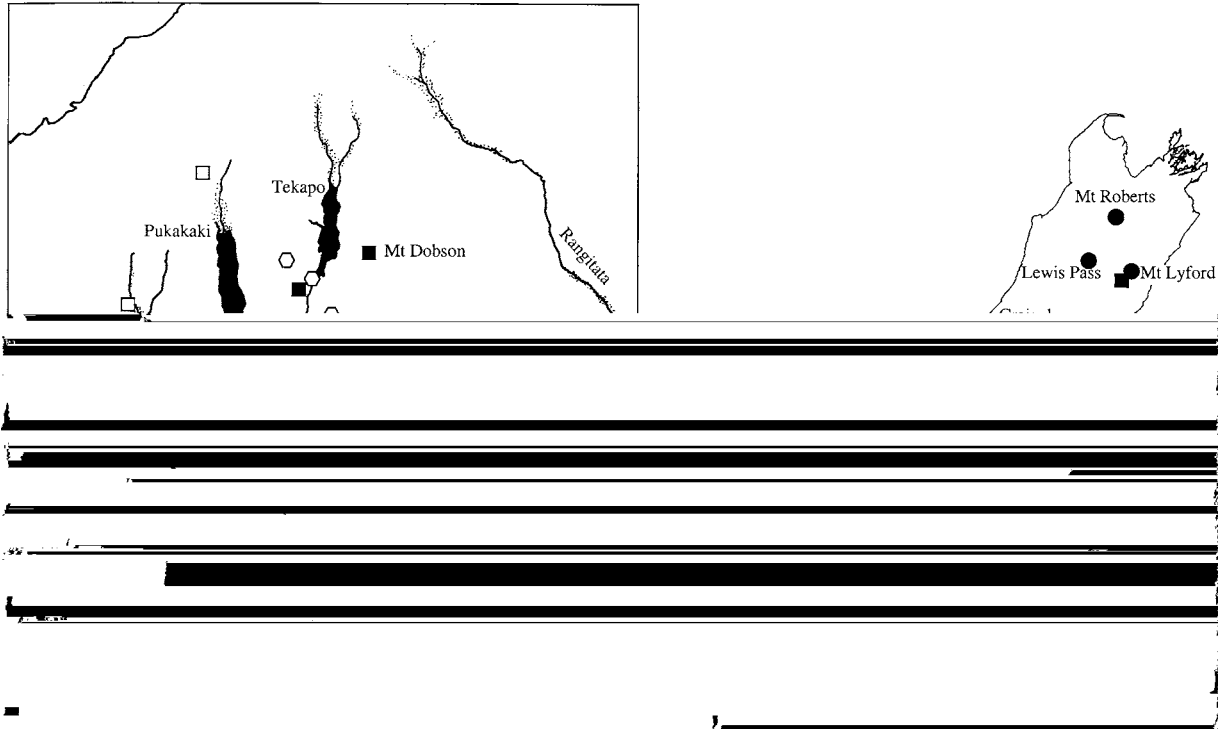
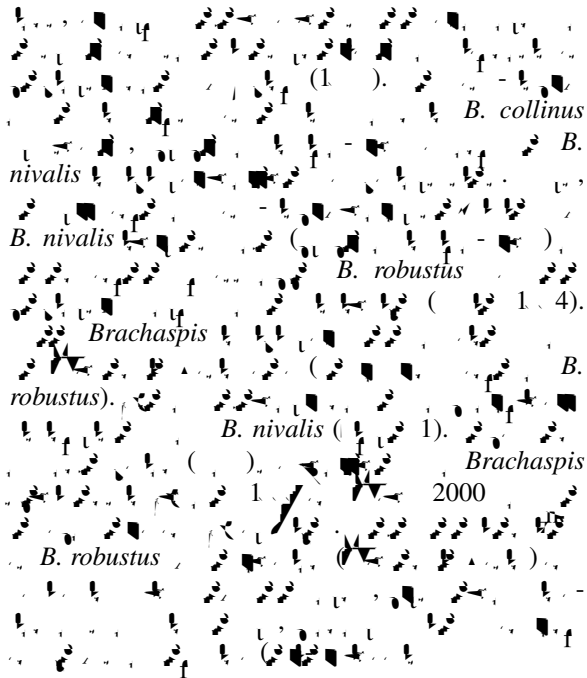
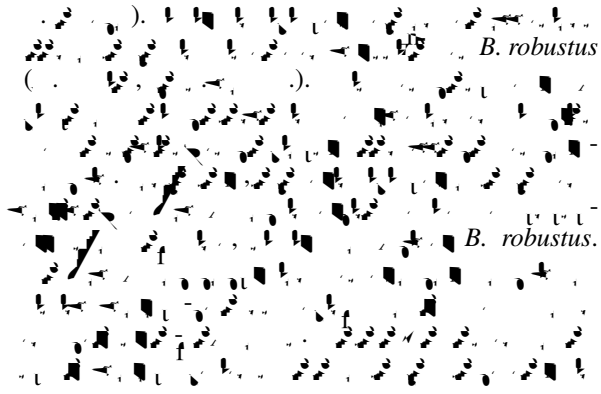


Figure 1. *Brachaspis* sampling locations on the South Island of New Zealand. ■ *B. nivalis*, ● *B. collinus*, ○ *B. robustus*, □ *Brachaspis*. (○) (1, 4), (○) (1), (□) (1), (□) (1).



1、), ()
 1、) 2000). ()
 () 2000).
 --14233 ()
) --145 ()
) ()
 1、4) ~3 0
 3'
 (12)
) 12 , 12 .
)
) 33 . 10 μ
 (200 μ) 2.5 0.25
) 40 4 °
 15 , 50 ° 30 , 2 ° 0
 4 ° 0
 5 5 °
 (10 μ) 5%
) %
 3 .5 1 / , 5% 0.5 /
 4 ° 200 /
 13
) 24
 4
 3'
 1- -21.5 ()
) 2- -3014 ()
) () 1、4).
robustus



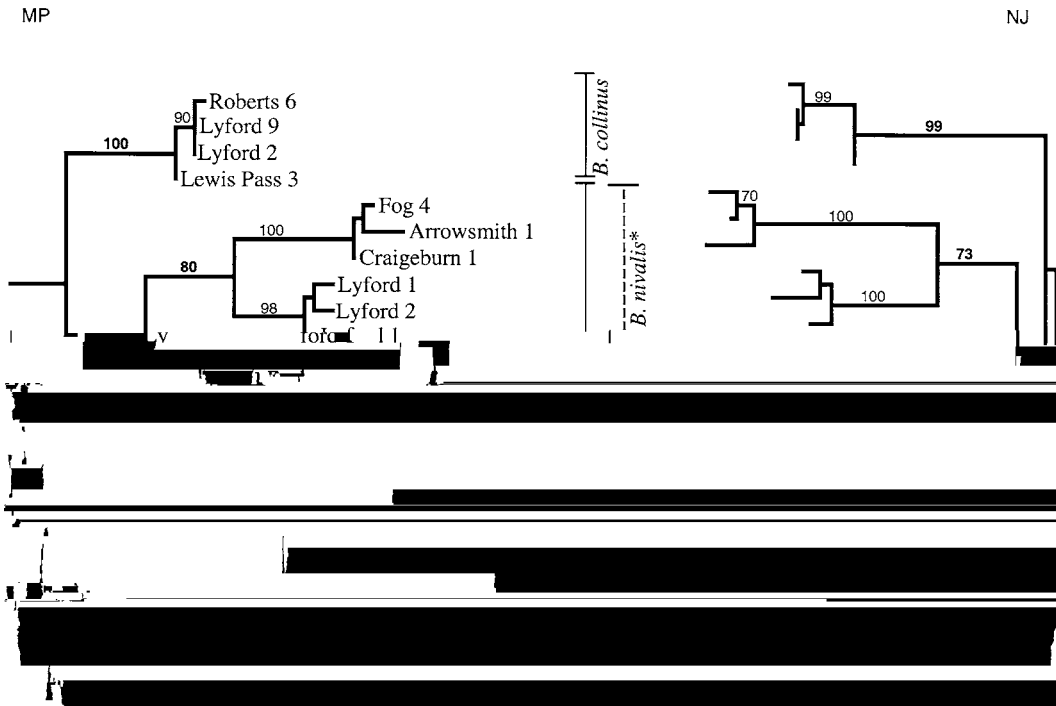


Figure 2. *Brachaspis* 500
 4.0 *B. robustus**, *B. nivalis**
Paprides nitidus.

Table 1. 2 *Brachaspis* (*B. collinus*, *B. nivalis*, *B. robustus*)
 (*B. collinus*, *B. nivalis*, *B. robustus*)

		Rob	Lyf	Lyf	Lew	Fog	Atr	Lyf	Lyf	Lyf	Lyf	St B	Roc	Roc	Roc	Roc	Dob	Tek	Roc	Sut	Sut	Mac	
Roberts	<i>collinus</i>																						
Lyford	<i>collinus</i>	0.2	<i>B. collinus</i>																				
Lyford	<i>collinus</i>	0.2	0.0																				
Lewis Pass	<i>collinus</i>	0.4	0.4	0.4																			
Fog Peak	<i>nivalis</i>	7.7	7.9	7.9	6.4																		
Arrowsmith	<i>nivalis</i>	7.7	7.9	7.9	6.4	0.4			<i>B. nivalis*</i>														
Lyford	<i>nivalis</i>	8.0	8.2	8.2	6.6	0.9	0.9																
Lyford	<i>nivalis</i>	6.0	6.3	6.3	5.1	4.2	3.8	4.7															
Lyford	<i>nivalis</i>	6.4	6.6	6.6	5.5	4.2	4.2	4.6	0.8														
Lyford	<i>nivalis</i>	5.8	6.0	6.0	4.9	4.2	3.8	4.3	0.7	0.7													
St Bathans	<i>nivalis</i>	7.3	7.1	7.1	6.6	7.9	7.5	7.9	6.3	6.6	6.2												
Rocky Top	<i>nivalis</i>	7.5	7.3	7.3	6.4	7.7	7.3	7.7	6.5	6.8	6.4	0.6							<i>B. robustus*</i>				

Brachaspis ()
B. nivalis ()
 3 *B. nivalis* ()
 ()
 () *B.*
robustus ()
B. nivalis ()
Brachaspis ()

(1) (2) (3) (4) (5) (6) (7) (8) (9) (10) (11) (12) (13) (14) (15) (16) (17) (18) (19) (20) (21) (22) (23) (24) (25) (26) (27) (28) (29) (30) (31) (32) (33) (34) (35) (36) (37) (38) (39) (40) (41) (42) (43) (44) (45) (46) (47) (48) (49) (50) (51) (52) (53) (54) (55) (56) (57) (58) (59) (60) (61) (62) (63) (64) (65) (66) (67) (68) (69) (70) (71) (72) (73) (74) (75) (76) (77) (78) (79) (80) (81) (82) (83) (84) (85) (86) (87) (88) (89) (90) (91) (92) (93) (94) (95) (96) (97) (98) (99) (100)

*B. robustus**

(1) (2) (3) (4) (5) (6) (7) (8) (9) (10) (11) (12) (13) (14) (15) (16) (17) (18) (19) (20) (21) (22) (23) (24) (25) (26) (27) (28) (29) (30) (31) (32) (33) (34) (35) (36) (37) (38) (39) (40) (41) (42) (43) (44) (45) (46) (47) (48) (49) (50) (51) (52) (53) (54) (55) (56) (57) (58) (59) (60) (61) (62) (63) (64) (65) (66) (67) (68) (69) (70) (71) (72) (73) (74) (75) (76) (77) (78) (79) (80) (81) (82) (83) (84) (85) (86) (87) (88) (89) (90) (91) (92) (93) (94) (95) (96) (97) (98) (99) (100)

(1) (2) (3) (4) (5) (6) (7) (8) (9) (10) (11) (12) (13) (14) (15) (16) (17) (18) (19) (20) (21) (22) (23) (24) (25) (26) (27) (28) (29) (30) (31) (32) (33) (34) (35) (36) (37) (38) (39) (40) (41) (42) (43) (44) (45) (46) (47) (48) (49) (50) (51) (52) (53) (54) (55) (56) (57) (58) (59) (60) (61) (62) (63) (64) (65) (66) (67) (68) (69) (70) (71) (72) (73) (74) (75) (76) (77) (78) (79) (80) (81) (82) (83) (84) (85) (86) (87) (88) (89) (90) (91) (92) (93) (94) (95) (96) (97) (98) (99) (100)

(1-2) -
J. Wild. Manag., **46**, 513-51
(1-)
Pissodes strobi
(). *Insect Mol. Biol.*, **6**

